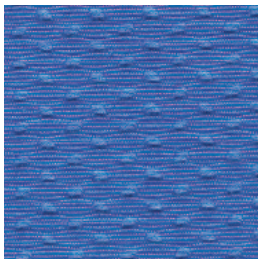
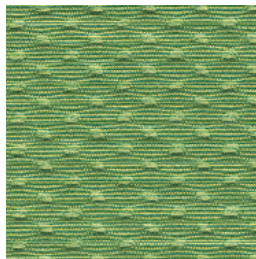




Stoffgruppe · Fabric · Tissu · Tessuto



D 70 azurblau



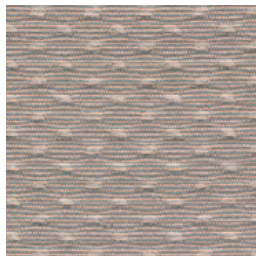
D 71 maigrün



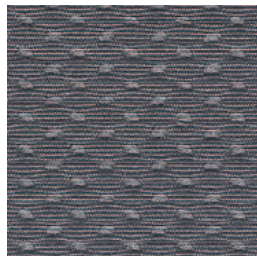
D 72 maisgelb



D 73 apfelsine



D 74 stein



D 75 steingrau

Die Größe der abgebildeten Stoffstrukturen entspricht nicht immer dem Originalstoff. Farbabweichungen sind aus drucktechnischen Gründen möglich.

The size of the materials structure shown does not always correspond to the original material.

Due to the limitations of the printing process the materials and colours shown are not always a true copy of the original.

La dimension des structures de matériau représentées ne correspond pas toujours au matériau d'origine.

Pour des raisons techniques d'impression, des variations de teintes sont possibles.

Technische Beschreibung

| | |
|-------------------------|--|
| Materialzusammensetzung | 100 % TREVIRA CS (Polyester) |
| Gewicht | ca. 615 g/lfm. |
| Breite | 170 cm |
| Brandschutz | DIN 4102 B1, entspricht den Normen in Deutschland |
| Scheuerfestigkeit | 50.000 Touren nach Martindale |
| Lichtechtheit | 5 |
| Besonderheiten | erfüllt Öko-Tex Standard 100 schadstoffarm geprüft |
| Reinigung | Mit einem feuchten Tuch abwischen. |

Technical Specifications

| | |
|-------------------------|---|
| Composition | 100 % TREVIRA CS (Polyester) |
| Weight | Approx. 615 g/lfm. |
| Width | 170 cm / 67" |
| Flammability | B55852 II GB and NBS California TB 133 US |
| Abrasion resistance | 50.000 rubs according to Martindale |
| Colourfastness to light | Martindale |
| Features | 5 |
| Maintenance | passes Eco-Tex Standard 100 for harmful substances Wipe clean with a damp cloth. |



Description technique

| | |
|-----------------------|--|
| Composition | 100 % TREVIRA CS (Polyester) |
| Poids | ca. 615 g/lfm. |
| Largeur | 170 cm |
| Classement feu | M1 |
| Résistance à l'usure | 50.000 mouvements selon Martindale |
| Solidité à la lumière | 5 |
| Spécialités | passé Eco-Tex Standard 100 contrôle de substances indésirables |
| Nettoyage | Essuyez avec une étoffe humide. |

Descrizione Technica

| | |
|---------------------------------|--|
| Composizione | 100 % TREVIRA CS (Polyester) |
| Peso | ca. 615 g/lfm. |
| Altezza | 170 cm |
| Resistenza al fuoco | UNI EN 1021 part 1 + 2 |
| Resistenza all'abrasione | oltre 50.000 "sfregamenti" secondo Martindale |
| Resistenza del colore alla luce | 5 |
| Specialità | realizzato Eco-Tex Standard 100 controllata al Sostanze indesidearte |
| Manutenzione | Pulire con panno umido. |

PREFORM GmbH
Esbacher Weg 15
D-91555 Feuchtwangen
Tel.: + 49 98 52 9070
Fax: + 49 98 52 907-77
info@preform.de
www.preform.de