

Kvadrat/Sitland

A curated selection

In Kvadrat we identified a partner who shares our same values of aesthetic, technological and functional research, combined with a special attention to product life cycle.

This selection of high-quality wool fabrics offers a mix and match of textures and colours, meant to complement and enhance our product range; from task chairs through soft seating to modular systems.

From bold to muted colours, from natural to technical materials, Kvadrat fabrics are designed specifically for public, commercial and private spaces.



The fabrics included in this card can be ordered in all the colour options available on the Kvadrat website.

FD\_Fiord 2

by Louise Sigvardt

Fiord is a versatile woollen upholstery textile with a subtle three-dimensional look. Originally designed by Norwegian designer Tone Barnung, it comes in refreshed colours created in collaboration with Louise Sigvardt. The construction of Fiord combines a mélange yarn with a unicoloured yarn that creates pearl-like dots that play across the textile's surface.

Composition: 92% new wool, worsted, 8% nylon  
Martindale: 60.000





RM\_Remix 3

by Giulio Ridolfo

Remix 3 is an elegant upholstery textile distinguished by exceptional depth of colour, designed by Giulio Ridolfo. It comes in 72 sophisticated colourways. Remix 3 looks unicoloured from a distance but reveals subtle details and colour contrasts when viewed close-up. The textile features a tight, minimalistic weave, and derives its lively colour play from a combination of two different mélange yarns, which each combine up to three hues.

Composition: 90% new wool, worsted, 10% nylon  
Martindale: 100.000





S1\_Steelcut 3

by Frans Dijkmeijer & Giulio Ridolfo

Unicoloured Steelcut 3 is an evolution of the archetypal woollen upholstery textile Steelcut, which comes in bright, confident hues by colour master Giulio Ridolfo. It is characterised by exceptional durability, tactility, and colour depth. Steelcut 3 features an innovative, intricate construction by Frans Dijkmeijer which offers a three-dimensional surface resembling small pyramids or steel points.

Composition: 90% new wool, worsted, 10% nylon  
Martindale: 100.000





S4\_Steelcut Quartet

by Frans Dijkmeijer & Giulio Ridolfo

Steelcut Quartet is an upholstery textile with a pioneering melange look, which offers a new expression of the acclaimed designs Steelcut and Steelcut Trio. Characterised by softness, colour depth and durability, it has a sustainable profile and comes in optimistic, warm colourways by Giulio Ridolfo.

Composition: 90% new wool, worsted, 10% nylon  
Martindale: 100.000



Sitland spa  
Via Cà Silvestre 52  
36024 Nanto, Vicenza - I  
t +39 0444 637 100  
f +39 0444 638 407  
info@sitland.com  
www.sitland.com






HE\_Hero 2

by Patricia Urquiola

Unicoloured Hero 2 is a full-bodied upholstery textile designed by Patricia Urquiola. It is characterised by its soft texture and exceptional colour richness, and comes in over 30 nuances. Hero 2 exemplifies Kvadrat's commitment to Conscious Design Principles. It is primarily woven from wool, a renewable resource, and is re-engineered to contain recycled nylon instead of virgin nylon. Consequently, it is suitable for recycling.

Composition: 97% new wool, 3% recycled nylon  
Martindale: 45.000






RW\_Re-Wool

by Margrethe Odgaard

Crafted using 45% recycled wool, Re-wool is a rich upholstery textile with a sustainable profile. The textile is partly made by reusing scraps from Kvadrat's yarn spinners in the UK. It is designed by Margrethe Odgaard. Reminiscent of colourful stitchings on a darker background, Re-wool features exceptional depth of colour, creating a dynamic play on the textile's surface when applied to furniture.

Composition: 45% recycled wool, 45% new wool, worsted, 10% nylon  
Martindale: 100.000









SE\_Steelcut Trio 3

by Frans Dijkmeijer & Giulio Ridolfo

Steelcut Trio is a hardwearing woollen upholstery textile with the same construction as Steelcut. Originally designed by Frans Dijkmeijer, it comes in updated colourways crafted by Giulio Ridolfo. Steelcut Trio is yarn-dyed and made from 3 differently coloured yarns.

Composition: 90% new wool, worsted, 10% nylon  
Martindale: 100.000



| Caratteristiche   | Features   |
|---|--|
|  Ignifugo  | Flame retardant  |
|  Riciclabile   | Recyclable   |
|  Riciclato   | Recycled   |
| Certificazioni  | Certifications   |
|  EU Ecolabel è un marchio europeo che certifica il ridotto impatto ambientale del prodotto | EU Ecolabel is a European brand that certifies the reduced environmental impact of the product |

CARTT32023

sitland

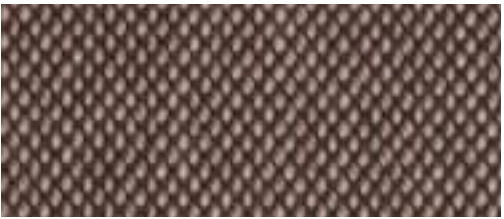
sitland

Kvadrat Selection





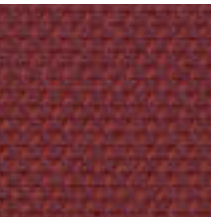
RM\_Remix 3 0653



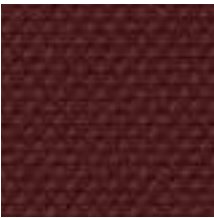
S4\_Steelcut Quartet 0354



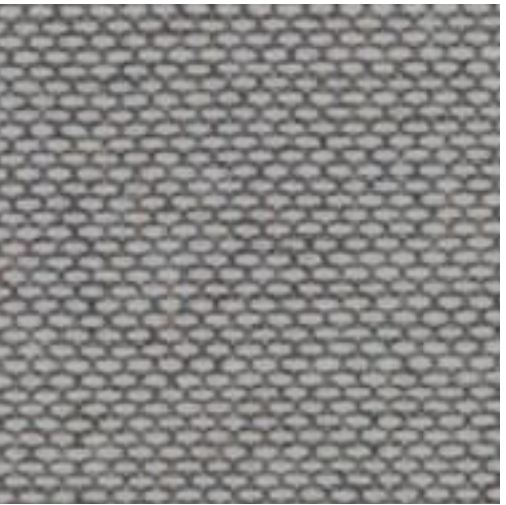
S1\_Steelcut 3 0605



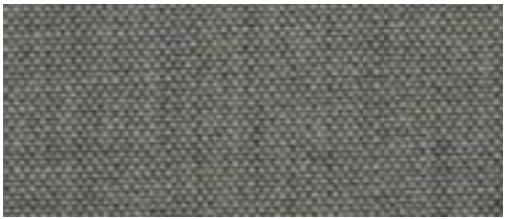
SE\_Steelcut Trio 3 0686



S1\_Steelcut 3 0682



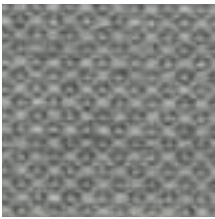
RW\_Re-Wool 0108



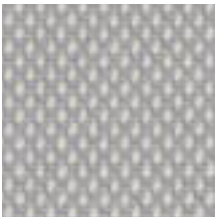
RM\_Remix 3 0133



S1\_Steelcut 3 0140



FD\_Fiord 2 0151



SE\_Steelcut Trio 3 0105



RM\_Remix 3 0773



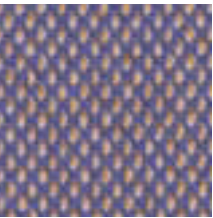
FD\_Fiord 2 0771



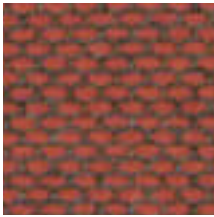
HE\_Hero 2 0622



S1\_Steelcut 3 0652



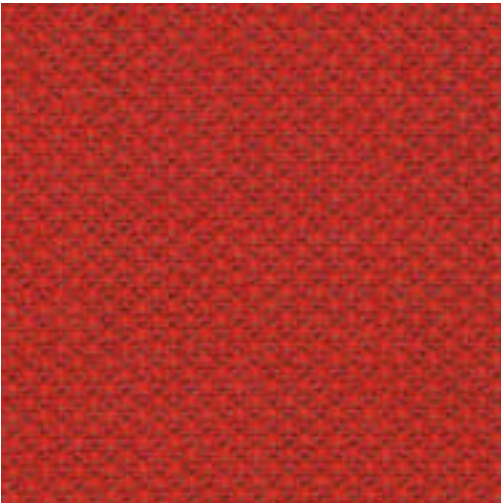
S4\_Steelcut Quartet 0644



RW\_Re-Wool 0558



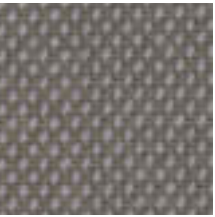
HE\_Hero 2 0542



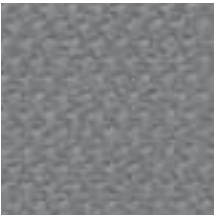
FD\_Fiord 2 0571



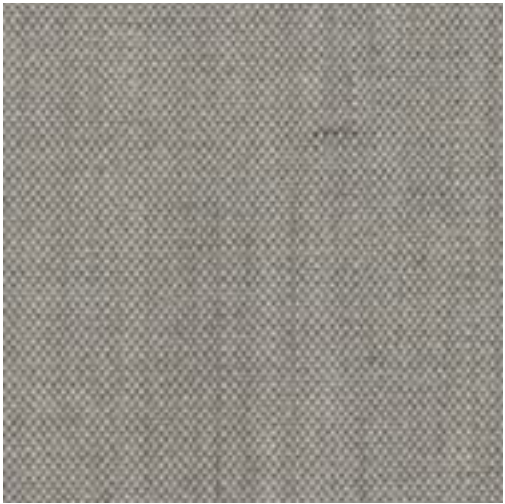
S1\_Steelcut 3 0562



SE\_Steelcut Trio 3 0246



S1\_Steelcut 3 0155



RM\_Remix 3 0126



FD\_Fiord 2 0101



SE\_Steelcut Trio 3 0796



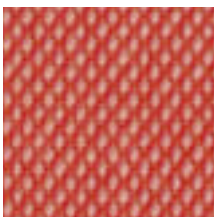
RM\_Remix 3 0762



SE\_Steelcut Trio 3 0746



RM\_Remix 3 0866



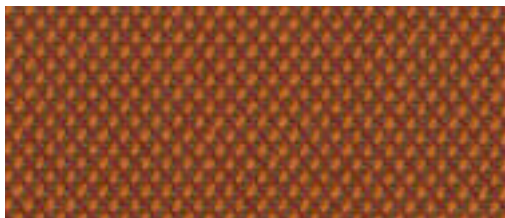
SE\_Steelcut Trio 3 0526



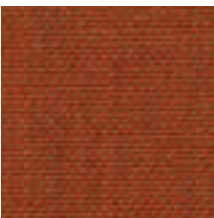
RM\_Remix 3 0516



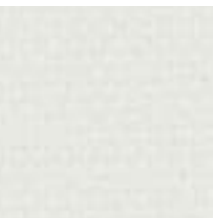
RM\_Remix 3 0536



SE\_Steelcut Trio 3 0576



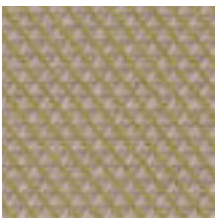
RM\_Remix 3 0443



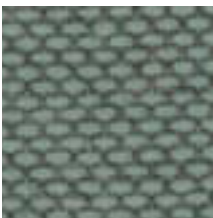
S1\_Steelcut 3 0110



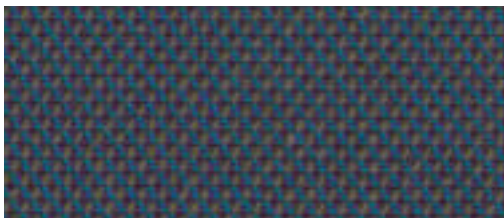
SE\_Steelcut Trio 3 0906



SE\_Steelcut Trio 3 0236



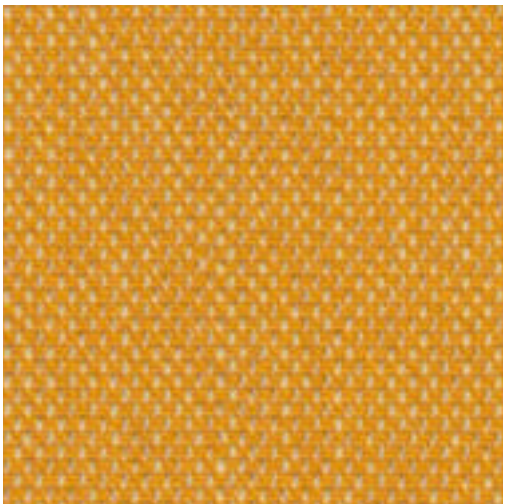
RW\_Re-Wool 0858



SE\_Steelcut Trio 3 0883



HE\_Hero 2 0772



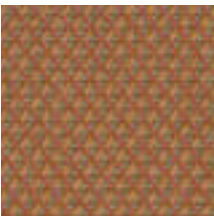
S4\_Steelcut Quartet 0434



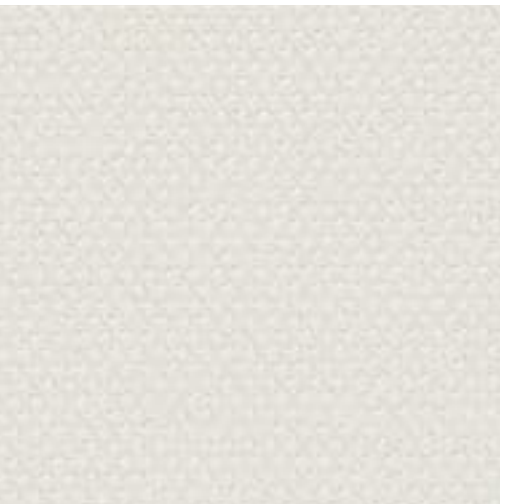
S1\_Steelcut 3 0452



SE\_Steelcut Trio 3 0446



SE\_Steelcut Trio 3 0436



S1\_Steelcut 3 0220



S4\_Steelcut Quartet 0114



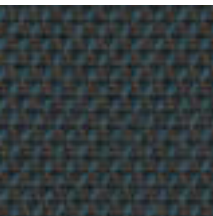
HE\_Hero 2 0102



FD\_Fiord 2 0322



HE\_Hero 2 0932



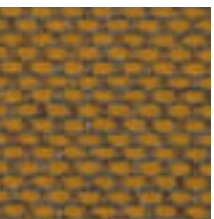
SE\_Steelcut Trio 3 0996



S1\_Steelcut 3 0932



S1\_Steelcut 3 0180



RW\_Re-Wool 0448



FD\_Fiord 2 0562



SE\_Steelcut Trio 3 0226



S4\_Steelcut Quartet 0414



RM\_Remix 3 0982



S1\_Steelcut 3 0190